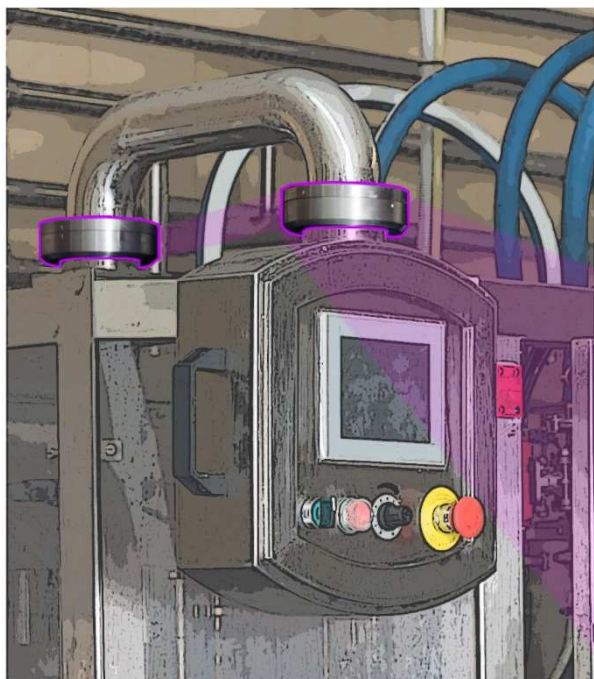


Rotating Mounting Bracket

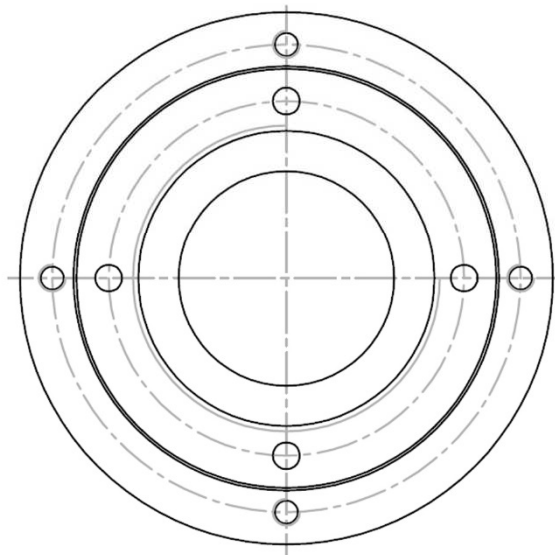
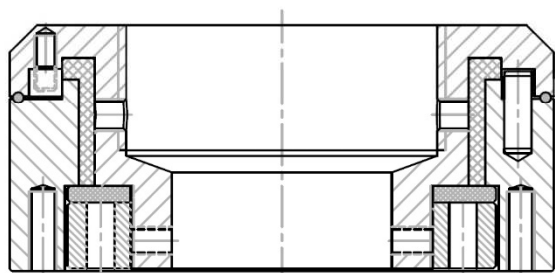
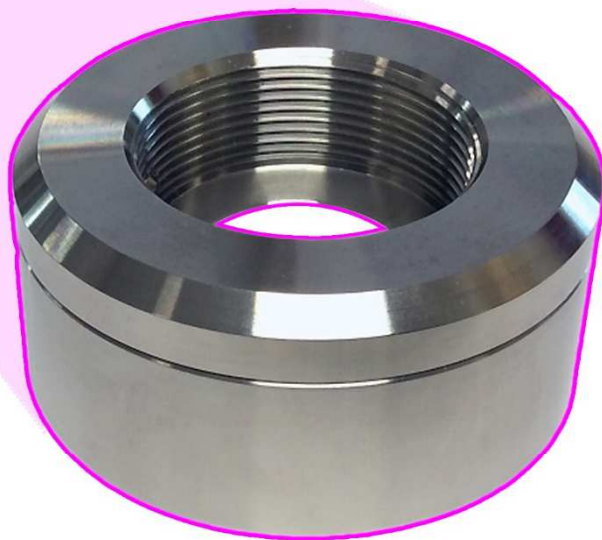
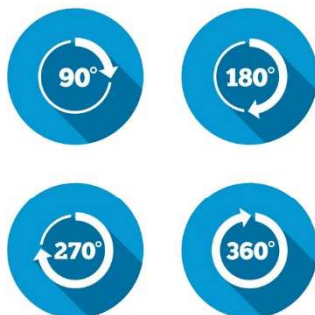
NEW

stainless steel



FEATURES:

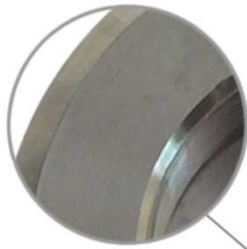
- Ease to tighten / loosen
- Anti-seizure system
- 100% resistance to corrosion & chemical agents
- High resistance to breakage
- Compliant to the EG Nr. 1935/2004



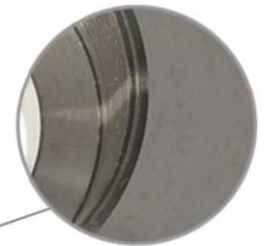
Rotating Mounting Bracket

NEW

stainless steel



Adjustable
Resistance



Anti-seize System
Thanks to the Arnite rings



Temperature & Corrosion Resistance
Thanks to the high quality Inox



Specific for dynamic
Movements

PERFORMANCE BASED ON DYNAMIC MOVEMENTS

Stainless Steel pipe connector used in hygienic environments and technically demanding industries.

The low level of maintenance required, the guaranteed long-lasting lifespan and the regulation capabilities of this component are key features for any machine that wants to distinguish itself.

We can offer a standard size as well as bespoke dimensions.

Achieve efficient solutions with the tubes connector and get the benefits for the food and pharmaceutical industries with food-grade materials and construction.